

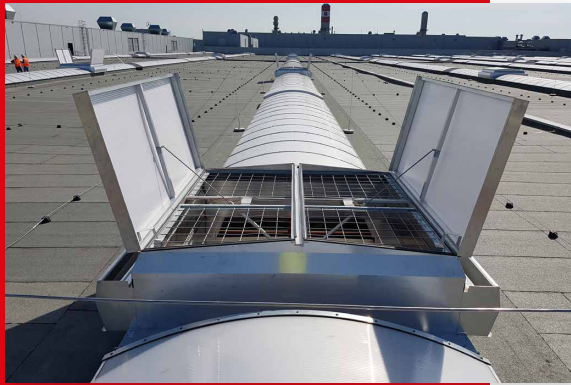


ACO LICHT **VARIOWEATHER** system description

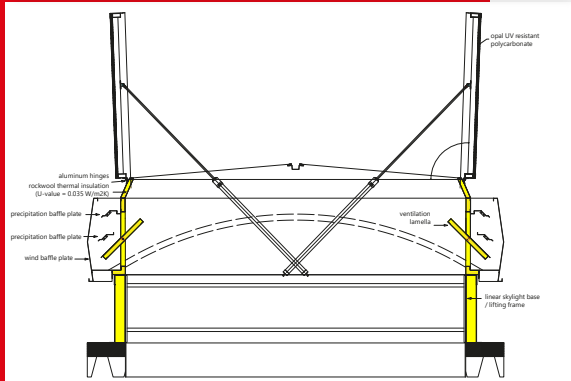




VARIOWEATHER – weather-independent ventilation unit with side lamellas



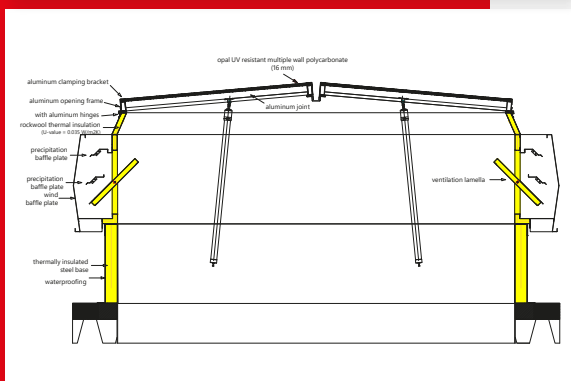
This newest member of the VARIO product family ensures, even under the most extreme weather conditions, the natural ventilation of workshops, industrial facilities, warehouses and single airspace halls. This is particularly significant where air exchange and the avoidance of excessive warming are required.



Several activities inevitably generate large amounts of heat, making the work of the people more difficult, deteriorating their sense of comfort, thereby reducing productivity.



Several roof-mounted gravitational ventilation systems require that the ventilation leaf be shut in times of rain and wind in order to avoid damaging the equipment or the property or machinery kept underneath.



Our Varioweather product offers a solution to this, which, depending on its design, may be left open in rain as well as in wind, ensuring the natural ventilation of the building it is fitted on.

For our products, manufactured using robot technology and the most advanced manufacturing procedures, quality (ISO 9001) and environmental protection (ISO 14001) are likewise considered important factors.



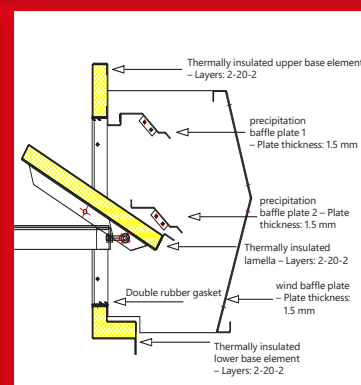
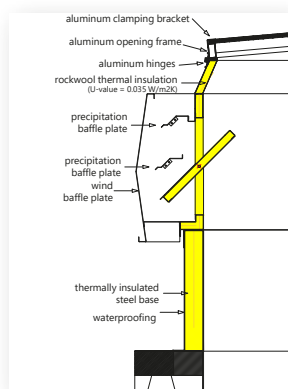
The base, besides the single layer aluminium design, may be made, uniquely in the market, **in thermally insulated form and with double rubber gasket** on the side lamellas.

The Varioweather weather-independent ventilation system may be mounted independently, but also in combination with some of our other products, and therefore they may be installed in:

- skylight strips
- under one of two leaved domes
- under ventilation shutters

Operation of side lamellae:

- with pneumatic cylinder,
 - with double tube one and close pneumatic cylinder
 - with single tube open and springloaded return pneumatic cylinder
- 24-36-230 V open – close motor, with opening feedback



VARIOWEATHER product table of standard dimensions*

serial number	size (cm x cm)		opening mechanism		Lamella height (cm)	Base height (cm)
1	170	190	pneumatic	24V motor	35-70	55-95
2	170	210	pneumatic	24V motor	35-70	55-95
3	170	240	pneumatic	24V motor	35-70	55-95
4	170	250	pneumatic	24V motor	35-70	55-95
5	170	270	pneumatic	24V motor	35-70	55-95
6	170	300	pneumatic	24V motor	35-70	55-95
7	190	210	pneumatic	24V motor	35-70	55-95
8	190	240	pneumatic	24V motor	35-70	55-95
9	190	250	pneumatic	24V motor	35-70	55-95
10	190	270	pneumatic	24V motor	35-70	55-95
11	190	300	pneumatic	24V motor	35-70	55-95
12	210	240	pneumatic	24V motor	35-70	55-95
13	210	250	pneumatic	24V motor	35-70	55-95
14	210	270	pneumatic	24V motor	35-70	55-95
15	210	300	pneumatic	24V motor	35-70	55-95
16	230	240	pneumatic	24V motor	35-70	55-95
17	230	250	pneumatic	24V motor	35-70	55-95
18	230	270	pneumatic	24V motor	35-70	55-95
19	230	300	pneumatic	24V motor	35-70	55-95
20	250	250	pneumatic	24V motor	35-70	55-95
21	250	270	pneumatic	24V motor	35-70	55-95

*Custom sizes are also available besides those quoted in the table



ACO Licht Kft.

H-2330 Dunaharaszti,
Jedlik Ányos utca 24.
Phone: +36-24-620-380
Fax: +36-24-620-389
E-mail: acohu@aco.hu
Website: www.acolicht.hu